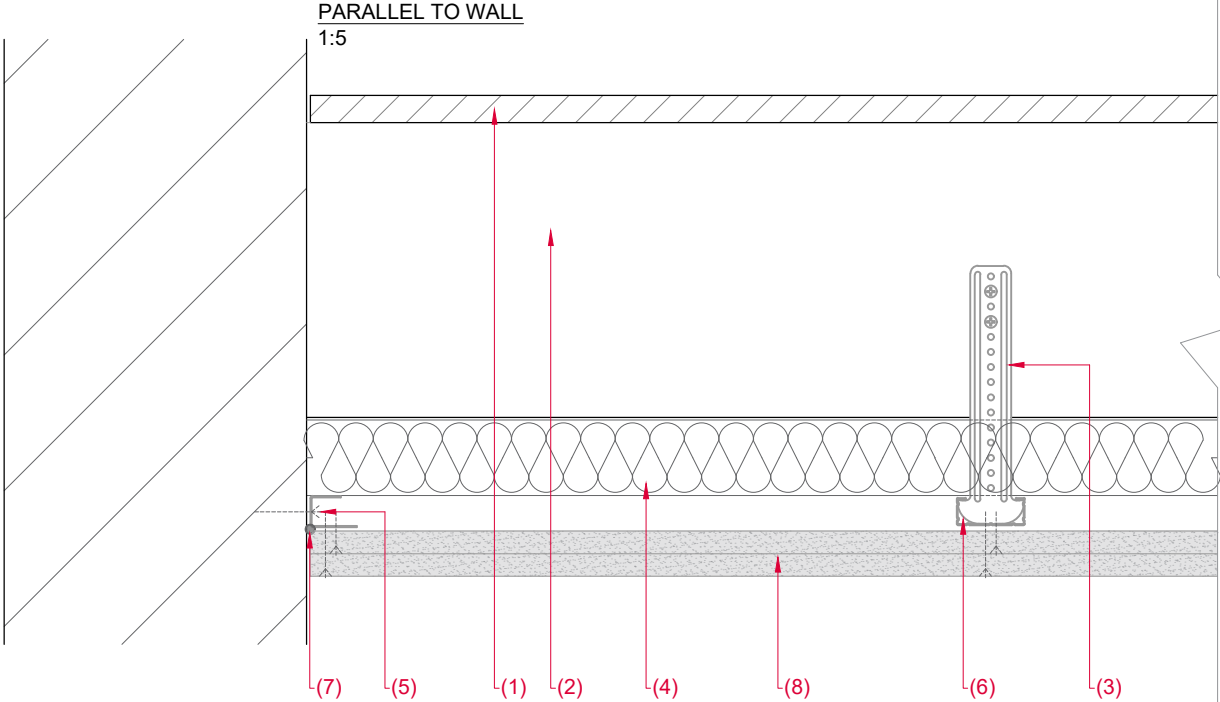
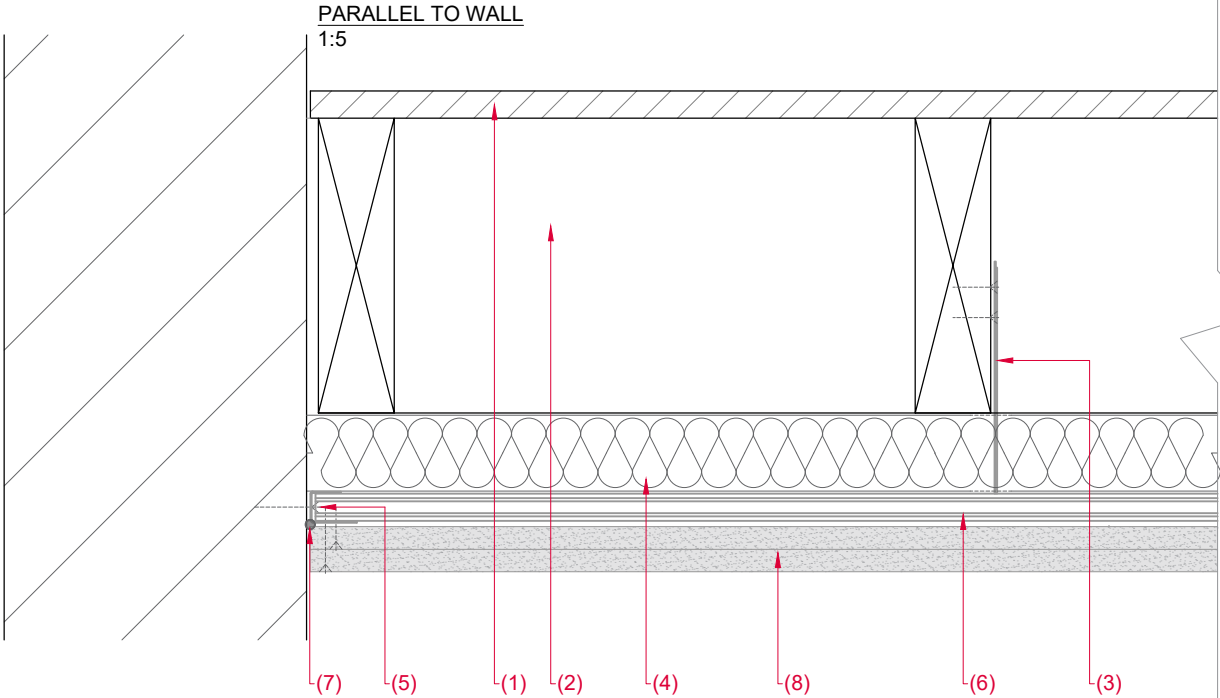


DETAIL 01 - CEILING COMPARTMENT

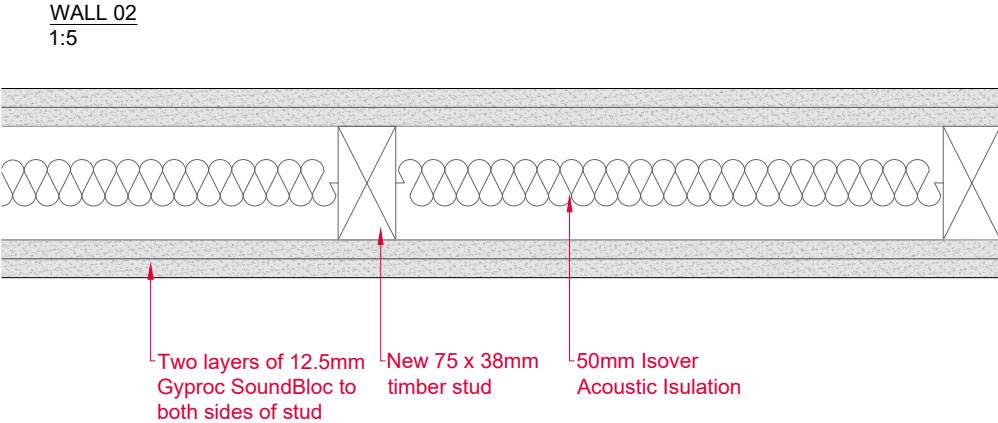
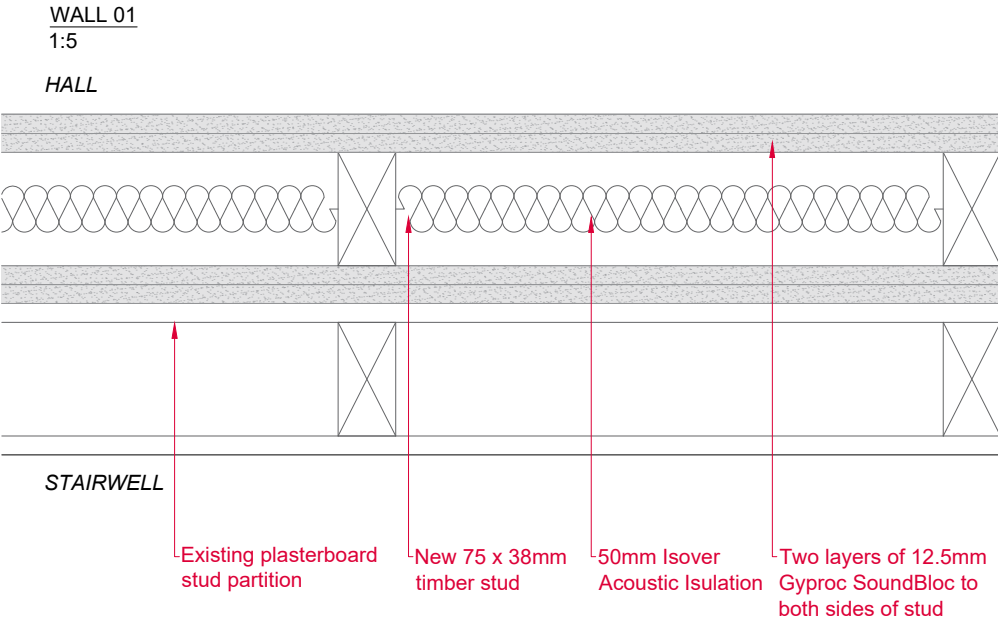
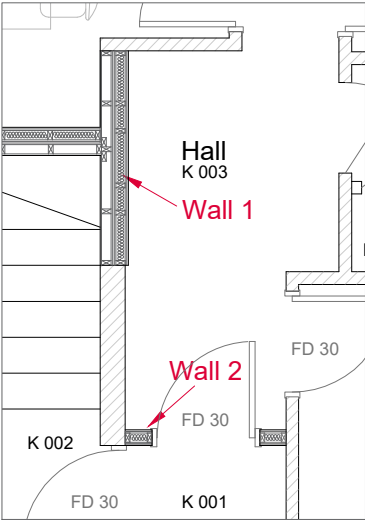


- 1. Existing floor deck.
- 2. Existing timber joists.
- 3. Gypframe GL6 timber Connectors at 1200mm centres fixed to side of joist. Two fixings min. 35mm from bottom of joist.
- 4. 50mm Isover Acoustic Insulation
- 5. Gypframe GL8 Track suitably fixed to wall at 600mm centres
- 6. Gypframe GL1 Lining Channels at max. 600mm centres for 15mm board. Lining channels extended with Gypframe GL3 Channel Connectors.
- 7. Gyproc Sealant at perimeter junctions.
- 8. Two layers of Gyproc SoundBloc 15mm fixed with ceiling screws.
 - 8.1. Layer 1: Drywall screws 25mm
 - 8.2. Layer 2: Drywall screws 40mm



DETAIL 02 - WALL COMPARTMENT

DRAFT ISSUE



Currie & Brown
Poseidon House, Neptune Park,
Maxwell Road, Plymouth, PL4 0SN
United Kingdom
Tel: 01752 273473 , Fax: 01752 257755, www.curriebrown.com



Client
Council of the Isles of Scilly

Title
Fire and Acoustic Details

Project
Kirklees Refurbishment Works

| | | | |
|----------|----------------|---------|----|
| Date | 01.12.2023 | Drawn | AH |
| Scale | n/a | Checked | KC |
| Drwg No. | 4101565-K-1-04 | | |
| Rev | | | |